



by  Signify

# Step into the future of site lighting

Site & Area

OptiForm





# Bring innovation to your site

Introducing OptiForm, a luminaire family that does it all. Invest in area and site lighting that supports your creative vision, enables easy installation and maintenance, and outperforms industry leaders. Escalate your outdoor space with luminaires that revolutionize site and area illumination by saving time, energy and money. Elevate your space with OptiForm.



# Redefining efficiency

For any site and area project, OptiForm luminaires are the intersection of **aesthetics, efficacy, and flexibility.**

- With up to 190 LPW, OptiForm offers best-in-class efficacy to meet energy codes and wattage requirements.
- Lumen outputs range from 2,000–63,000, creating a heightened sense of security for any outdoor site.
- Eleven optical distributions are available to meet photometric requirements for even the most challenging applications.
- A low-profile and lightweight design enhances any project for site integration and simplifies installation.

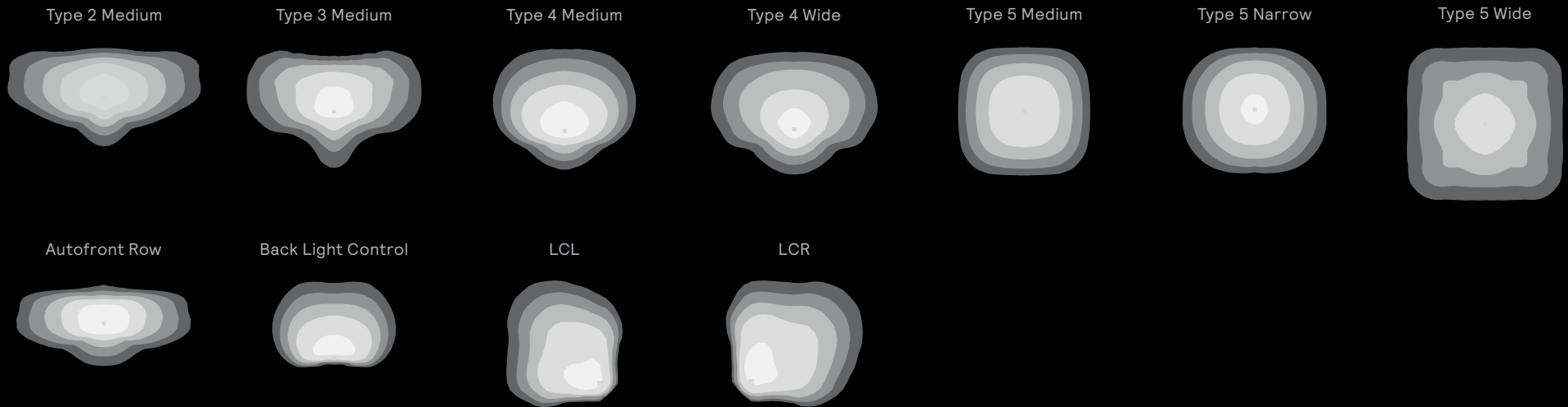






**Illumination your way**

# Optical Distributions



OptiForm offers three sizes and multiple optical distributions to suit a variety of applications. Specialty optics and shields are available to illuminate the spaces you need and shield the spaces you don't.

## Optical distributions available with OptiForm

- **Precision Plus Optics:** Type 2, 3, 4, 5
- **Site & Area Optics:** Type 2, 3, 4, 5 medium, type 4 wide, type 5 wide, type 5 narrow, auto front row
- **Specialty optics** eliminate spill light: backlight control, LEED corner left, LEED corner right
- Internal shields also available

# Installation designed with you in mind



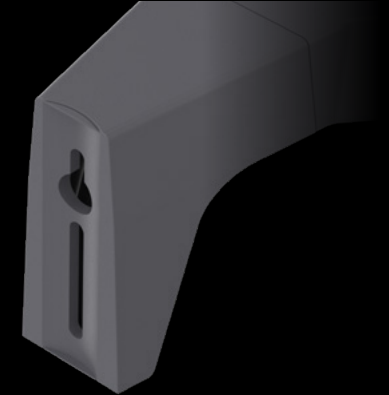
## Lightweight design

Enjoy the convenience of installation facilitated by just one person – whether you are mounting the small luminaire or the large.



## Retrofit arm mount capability standard

Offering the convenience of a Retrofit Arm Mount, built-in to the luminaire. This means you can mount to existing drill patterns with no additional pieces necessary.



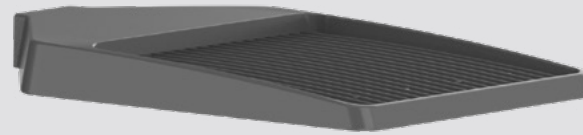
## Round or square pole mounting standard

A standard arm that easily mounts to round and square poles, no additional pieces required. No action is required for mounting to a square pole. When mounting to a round pole, simply remove the knock out on the back of the arm.

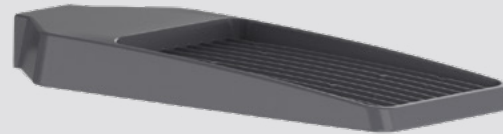


## Two-piece housing

Experience easy installation enabled by the two-piece housing



OptiForm Large



OptiForm Medium



OptiForm Small

## Three mounting options

Maintain continuity in your site with cohesive designs across three mounting options.



Standard Arm



Mast Arm



Wall Bracket

# A sustainable choice

At Signify, we are on a mission to create a better world with environmentally friendly light. While we transition toward a sustainable and circular economy, we are rethinking the way we produce and consume. As a new generation of LED lighting, OptiForm luminaires were designed to have as minimal of an impact on the environment as possible.

## OptiForm achieves this in several ways:

✓	Enhanced optics that optimize performance without sacrificing energy efficiency.	✓	Made by a company that has been 100% carbon neutral and had zero waste to landfill since 2020.
✓	Fully connectable to achieve maximum lighting efficiency and efficacy.	✓	Uses 78% less energy than conventional HPS technology.
		✓	Compliant with International Dark Sky, featuring zero uplight.



# Maintenance, simplified.

All OptiForm luminaires are equipped with Service Tag.

Service Tag identifies each product with a unique QR code that can be scanned to access specific product information using a hand-held device like a smartphone or tablet. If required, spare parts can also be configured to the original registered settings for any specific luminaire. Your installation and maintenance process become faster, easier and more cost-effective throughout the life of the product with these Service Tag features.





# Controls



## Dimming Options

### Save energy automatically and on demand

- Comes with a dimmable LED driver for 0-10V dimming.
- Dynadimmer facilitates on-demand light levels for high energy savings.
- Field Adjustable Wattage Selector enables user to manually adjust the wattage in the field.



## Programmable Motion Response

### Standalone Motion Sensor

- Dims luminaires to 25% power when no motion is detected
- Settings can be adjusted in the field



## Outdoor Multisensor

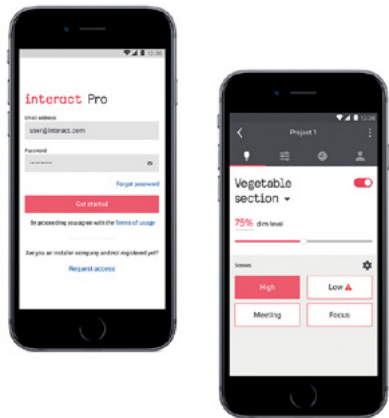
### Observe and adjust with monitoring sensors

- Allows for advanced adaptive lighting management.
- Monitor motion detection, temperature and noise levels with environmental sensors.

# Unlock connectivity with Interact

## Make the leap from smart lighting to super smart lighting

Connectivity is the future and key to unlocking your smart building potential. Interact is a connected system with wireless luminaire level controls and integral occupancy & daylight sensing.



## Start simple and lay the foundation

- Smart lighting with luminaire integrated occupancy and daylight sensor.
- Save up to **80%** on installation and material cost compared with more complex systems.<sup>1</sup>

1. Compared to wired networked lighting control systems.

## Features

- No additional wiring required during installation.
- Motion, daylight sensing and grouping can be done right out of the box.
- A gateway can be added at any time for additional features, such as scheduling and remote management.
- Set up is simple and can be done from your smart phone.
- Interact delivers a consistent experience between indoor and outdoor lighting control.
- Interact is the only system that offers wireless connectivity and control for lamps, luminaires, and retrofit kits.







# Join the OptiForm revolution

Learn how Gardco Optiform luminaires revolutionize site lighting for your projects. Simplify installation and maintenance and achieve industry-leading efficacy without compromising on your design.

Contact a Sales Representative for a personal demonstration or visit [gardcolighting.com/optiform](https://gardcolighting.com/optiform) for more information.

