



Smart-UPS Lithium-ion

Lower Operating Costs. Perfect for distributed IT.

Trusted protection with 3x the battery life from 500VA to 3000VA

apc.com/lithium-ion

Life Is On



The world's most popular network and server UPS now with Lithium-ion batteries

APC Smart-UPS Lithium-ion with APC NetShelter 6U Low-profile Wallmount Rack Enclosure Cabinet with APC NetBotz solution

Save space

The APC NetShelter 6U low-profile wall mount keeps your UPS securely out of the way.

Security

APC NetBotz for physical and environmental security

Short depth UPS*

The Smart-UPS Lithium-ion short depth UPS fit short depth and regular racks, giving you extra space for cable management.

Built-in remote management

Built-in secure cloud monitoring with the EcoStruxure Ready Smart-UPS Ethernet Port.

Lithium-ion batteries last 3x more than VRLA

Smart-UPS Lithium-ion batteries last 3x longer than VRLA batteries. You don't have to replace the battery for 8-10 years.**

Broad range of power options

Smart-UPS Lithium-ion is available from 500VA-3000VA.



*Short Depth available in 500VA/750VA/1000VA/1500VA models

**Under normal operating conditions

Save up to 50% on TCO with Smart-UPS Lithium-ion

APC Smart-UPS with Lithium-ion technology enables IT professionals to lower Total Cost of Ownership (TCO) by minimizing UPS maintenance and offering remote UPS management across distributed environments.

APC™ award-winning Smart-UPS™ is the most popular UPS in the world for servers, storage and network power protection. Now available with Lithium-ion batteries to provide 3X the battery life (8-10 years) compared to valve-regulated lead-acid (VRLA) batteries (3-5 years). Smart-UPS Lithium-ion features short depth models from 500VA-1500VA to help save space for cable management or short depth rack mounting.

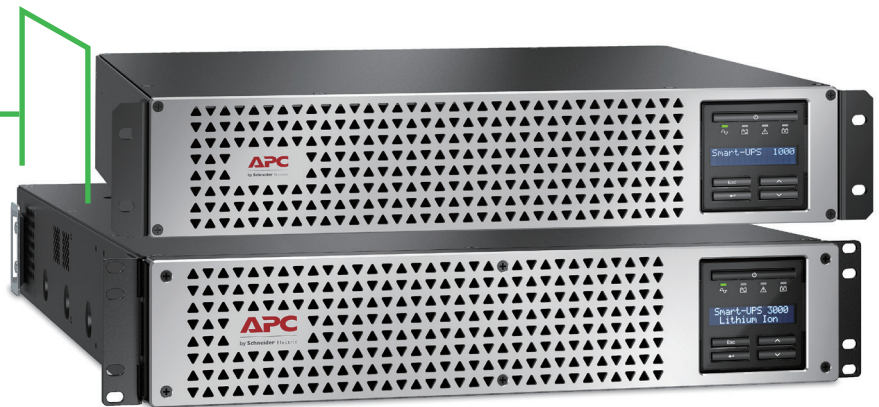
All Smart-UPS are EcoStruxure ready with the EcoStruxure Ready Smart-UPS Portal remote monitoring, the only built-in cloud monitoring option on the market. Smart-UPS provides availability and manageability to your network allowing you to focus on business growth instead of business downtime. Trusted to protect critical data and equipment from power problems by supplying clean and reliable network-grade power.



Smart-UPS Lithium-ion features

Intelligent and efficient network power protection. Ideal for servers, point-of-sale, routers, switches, hubs and other network devices.

Save up to 15" of space on the SMTL short depth models*



Short depth UPS**

Suitable for short depth and standard racks. Short Depth UPS provides extra space for cable management.

Built-in remote management

Built-in secure cloud monitoring with the EcoStruxure Ready Smart-UPS Ethernet Port. Pre-installed Network Management options for remote management and control.

Lithium-ion batteries

Up to 65% lighter and 3X longer life than VRLA batteries.

Five-year warranty

Peace of mind with a five-year warranty on both electronics and internal batteries.

Network-grade power

Provides stable power conditions by filtering noise, automatic voltage regulation (AVR) and surge protection.

Intelligent battery management system

Monitoring at the cell level to manage voltage helps Lithium-ion batteries provide a higher level of performance.

Operate without battery

Immediately protect equipment when power returns after a complete discharge of the battery.

Built-in energy meter

Measures energy use and displays UPS efficiency in operating modes for easy tracking

*Short Depth available in 500VA/750VA/1000VA/1500VA models

Smart-UPS Lithium-ion continued



Switched outlet group

Control a group of output load receptacles independent from the main UPS:

- Cycling the entire UPS
- Sequenced turn ON/OFF
- Shedding of noncritical loads based on parameters (battery time, runtime remaining and overload)
- Scheduled time OFF to conserve energy
- Rebooting hung device without cycling the entire UPS

Communication ports

Options of Serial, USB, EcoStruxure Ready Ethernet Port and SmartSlot™ for network accessory cards.

Communication protocols

Choose from Modbus serial, USB PowerSummary, HTTP, SNMP and Telnet.

Flash upgradeable firmware

Allows for field updates of firmware via communication ports or Network Management Card (NMC).

Input circuit breaker

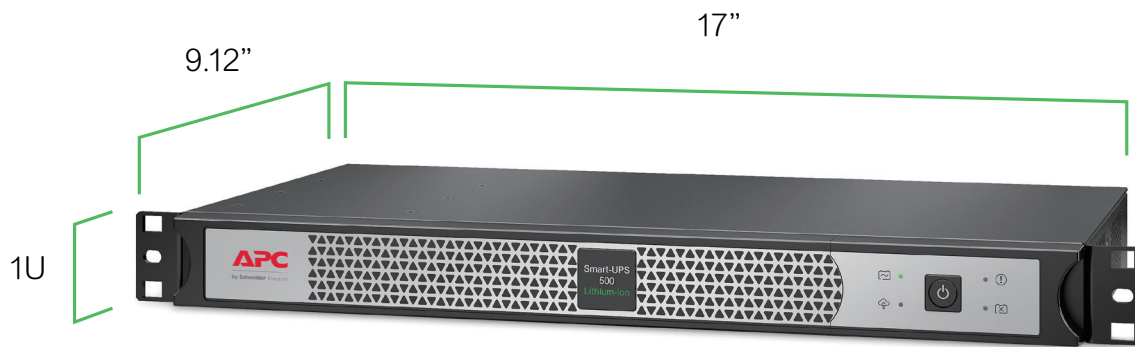
Re-settable protection.

High-efficiency green mode

Achieves up to 96% efficiency which minimizes utility and cooling costs without compromising UPS performance or reliability

Smart-UPS SC Lithium-ion features

Power protection for entry-level servers, voice and data networks



Short depth UPS

At 9.14 in, the Smart-UPS Lithium-ion SCL is the smallest 1U 500VA UPS available today.

Rack/tower convertible

Provides flexibility to change from a rack to tower installation using optional accessory.

Communication ports

Easy connection and initialization by Serial ports.

Use USB with Serial to USB adapter.

*EcoStruxure Ready Ethernet Port for built-in easy-to-use remote monitoring feature that provides automatic notifications, firmware updates and advanced support services. Ideal for small business monitoring.

Rugged sheet metal

Construction rigidly holds and protects critical electrical components.

Audible alarms

Provides notification of changing utility power and UPS power conditions.

Input circuit breaker

Re-settable protection.

Two-stage network grade power conditioning

Circuitry filters power aberrations.

Site wiring error

Error wiring detection.

**Embedded network management card

Allows users to remote monitor and control the UPS via secure network browsers or external command line interfaces. Ideal for fleet management.

Lithium-ion batteries

Up to 65% lighter and 3X longer life than VRLA batteries.

*APC SmartConnect feature available on the "C" suffix model

**Embedded Network Management Card option available on the "NC" suffix model

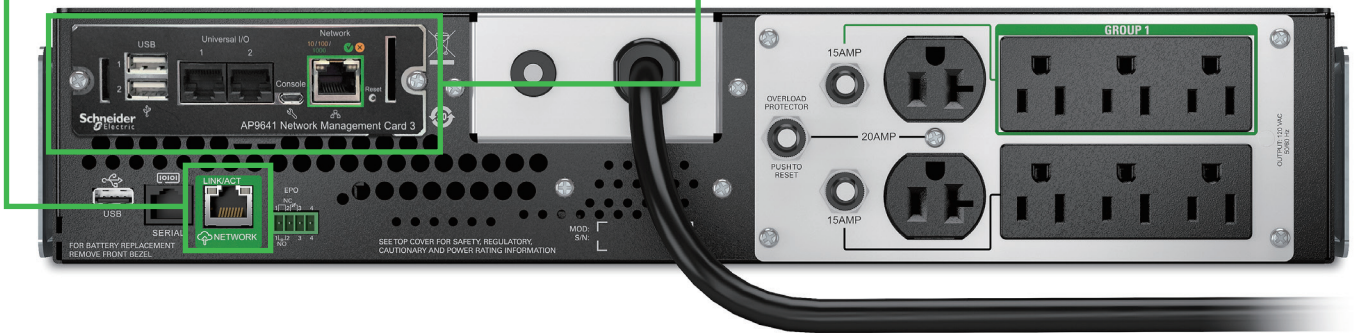
Smart-UPS management solutions

EcoStruxure Ready Built-in Cloud monitoring

Connect to either the Smart-UPS Portal or to EcoStruxure IT via the SmartConnect Ethernet Port

UPS Network Management Cards Connect directly to your network

A UPS Network Management Card allows for secure remote monitoring and control of an individual UPS



PowerChute Business Edition

Built-in manageability for your UPS unit

Graceful system shutdown of connected equipment during an extended power outage or computer problem



PowerChute Network Shutdown

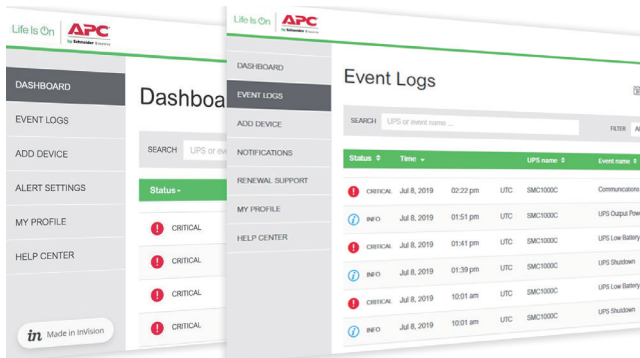
Provides graceful network-based shutdown of physical and virtual IT architectures

Network-based, graceful, unattended shutdown and restart of your physical servers and virtual machines during prolonged power disturbances.

*Embedded Network Management Card option available on the "NC" suffix model

EcoStruxure Ready Smart-UPS

Secure monitoring and UPS fleet management.

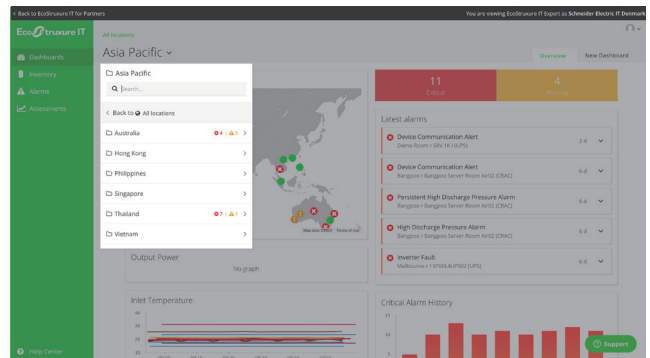


Built-in EcoStruxure Ready Smart-UPS Port

Secure web portal for basic monitoring.

Provides visibility direct to the customer to help make proactive decisions and maximize uptime.

Ideal for small and medium businesses who prefer to self-manage

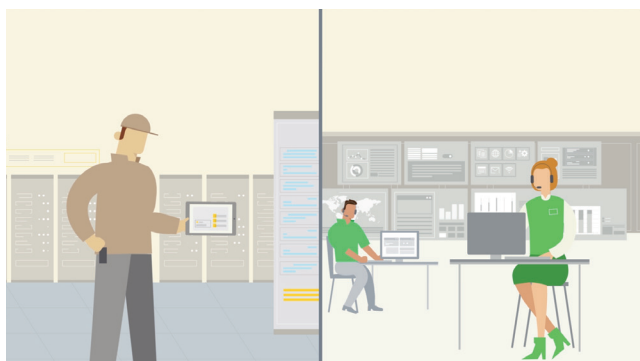


EcoStruxure IT Expert

The do-it-yourself advanced monitoring

We empower you to monitor and service customers on your own or provide EcoStruxure IT Expert to your customers who prefer a self-managed option

Ideal for distributed IT sites and businesses with mixed IT environments.



EcoStruxure IT Asset Advisor

We advise, you maintain

We provide monitoring services, and you handle the maintenance. This option appeals most to partners who want to use their own on-site service.

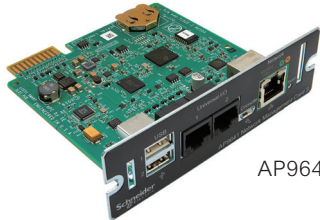


EcoStruxure IT Monitoring and Dispatch

We monitor and service

We provide monitoring and maintenance services on your behalf. Ideal for IT solution providers who want to add service without additional cost to your business model.

Smart-UPS accessories



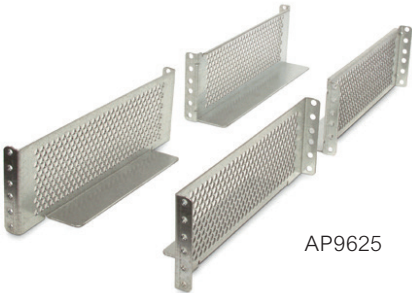
AP9641



AP9834

UPS management accessories

- AP9640: UPS network management card
- AP9641: UPS network management card with environmental monitoring
- AP9643: UPS network management card with environmental monitoring, out-of-band access and Modbus
- AP9834: APC USB Wi-Fi Device [compatible with AP9641 & AP9643]



AP9625

Rail Kit options

- AP9625: APC Smart-UPS two-post rail kit



SBP1500RM

Service bypass panels

- SBP1500RM: APC service bypass PDU, 120V; 15 amp with (8) NEMA 5-15R

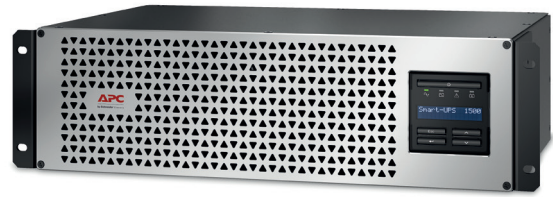


AP9562

Power distribution units

- AP9562: APC Rack PDU, Basic, 1U, 15A, 120V, (10) NEMA 5-15R
- AP9567: APC Rack PDU, Basic, Zero U, 15A, 120V, (14) NEMA 5-15R

Product family



SKU technical specifications

	SCL500RM1UC *SCL500RM1UNC	SMTL750RM2UC * SMTL750RM2UCNC	SMTL1000RM2UC *SMTL1000RM2UCNC	SMTL1500RM3UC *SMTL1000RM2UCNC
Topology	Line Interactive			
Output				
Output power capacity	400 Watts / 500 VA	600 Watts / 750 VA	800 Watts / 1000 VA	1350 Watts / 1500 VA
Nominal output voltage	120V			
Output voltage distortion	Less than 5% at full load			
Output frequency (sync to mains)	50/60 Hz +/- 3 Hz (auto sensing)			
Waveform type	Sine Wave			
Output connections	(4) NEMA 5-15R	(6) NEMA 5-15R		
Switched outlet group	Yes/One			
Efficiency at full load	>96%			
Input				
Nominal input voltage	120V			
Input frequency	50/60 Hz +/- 3 Hz (auto sensing)			
Input connections	NEMA 5-15P			
Input voltage range for main operations	92 – 139Vac	82 – 144Vac		
Batteries and runtime				
Battery type	Lithium-ion			
Runtime	Please refer to www.apc.com for runtime charts			
Communications and management				
Interface port(s)	USB Type A, APC SmartConnect (RJ45) – only on the “C” suffix model	Serial (RJ45), SmartSlot, USB, APC SmartConnect (RJ45)		
Available SmartSlot™ interface quantity	0, *embedded Network Management Card in “NC” suffix model	1, *embedded Network Management Card in “NC” suffix model		
Control panel	LED display	Multi-function LCD status and control console		
Audible alarms	Yes			
Physical				
Net HxWxD	1.75" x 17" x 9.14"	3.39" x 17.25" x 12.5"	3.39" x 17.25" x 12.5"	5.14" x 17.25" x 12"
Rack height	1U	2U	2U	3U
Net weight	9.2 lbs	34 lbs	36 lbs	43 lbs
Shipping weight	14.2 lbs	39 lbs	41lbs	50 lbs
Shipping HxWxD	6.6" x 23.2" x 13.3" for both	9" x 23" x 18.6"	9" x 23" x 18.6"	11" x 17.64" x 23"
Color	Black [Silver front bezel]			
Environmental				
Operating environment	32 – 104 °F (0 – 40 °C)			
Operating relative humidity	0 – 95%			
Operating elevation	0-10000 feet (0-3000 meters)			
Storage temperature	5 – 113 °F (-15 – 45 °C) short term storage			
Storage relative humidity	0 – 95%			
Storage elevation	0-25,000 feet (0-7620 meters)			
Audible noise at 1 meter from surface of unit	45.0dBA			
Conformance				
Regulatory approvals	UL 1778, UL 1973, CSA, NOM			
Standard warranty	5-Year UPS and batteries			

Product family



SKU technical specifications

	SMTL2200RM2UC SMTL2200RM2UCNC*	SMTL3000RM2UC SMTL3000RM2UCNC*
Topology	Line Interactive	
Output		
Output power capacity	1920 Watts / 2200VA	2700 Watts, 3000VA
Nominal output voltage	120V	
Output voltage distortion	Less than 5% at full load	
Output frequency (sync to mains)	50/60 Hz +/- 3 Hz (auto sensing)	
Waveform type	Sine Wave	
Output connections	(8) NEMA 5-15R, (2) NEMA 5-20R	
Switched outlet group	Yes/One	
Efficiency at full load	>96%	
Input		
Nominal input voltage	120V	
Input frequency	47 ~ 63 Hz +/- 3 Hz (auto sensing)	
Input connections	NEMA 5-15P	
Input voltage range for main operations	63Vac ~ 154Vac	
Batteries and runtime		
Battery type	Lithium-ion	
Runtime	Please refer to www.apc.com for runtime charts	
Communications and management		
Interface port(s)	Serial (RJ45), SmartSlot, USB, APC SmartConnect (RJ45)	
Available SmartSlot™ interface quantity	1, *embedded Network Management Card in "NC" suffix model	
Control panel	Multi-function LCD status and control console	
Audible alarms	Yes	
Physical		
Net HxWxD	3.39 x 17.01 x 26.89 inches	
Rack height	2U	
Net weight	73.37 lbs	77.7 lbs
Shipping weight	89.71 lbs	94.05 lbs
Shipping HxWxD	10" x 23.62" x 38.6"	
Color	Black [Silver front bezel]	
Environmental		
Operating environment	32 – 104 °F (0 – 40 °C)	
Operating relative humidity	0 – 95%	
Operating elevation	0-10000 feet (0-3000 meters)	
Storage temperature	5 – 113 °F (-15 – 45 °C) short term storage	
Storage relative humidity	0 – 95%	
Storage elevation	0-50000 feet (0-15240 meters)	
Audible noise at 1 meter from surface of unit	< 55 dBA	
Conformance		
Regulatory approvals	UL 1778 2nd, CSA, NOM	
Standard warranty	5-Year UPS and batteries	

Life Is On



Get certified today!

apc.com/lithium-ion

Schneider Electric

One Boston Place
Floor 27
Boston, MA 02108
United States
www.apc.com

